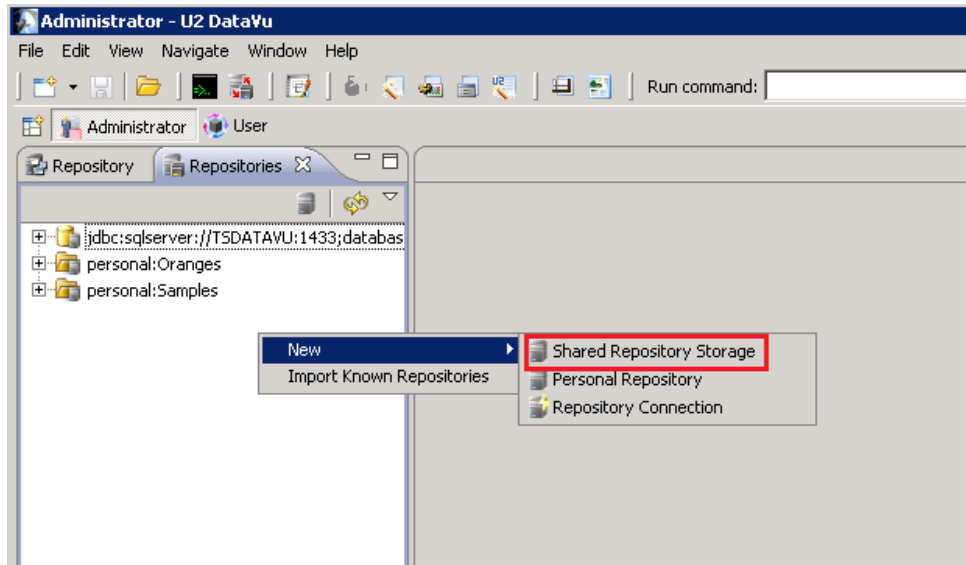


Creating the Shared Repository Storage in U2 DataVu

This document describes how to create the Shared Repository Storage in MySQL. Shared Repositories are created and saved in the MySQL Shared Repository Storage schema.

After creating the repository schema in MySQL you create the shared repository storage in U2 DataVu.

1. In the Repositories tab of the Administrator Perspective, right click on the white space and select **New > Shared Repository Storage**.



2. Create the RSBI schema. Be sure to test the connection. The User ID is what you created when you installed MySQL. Click **Next**.

Enter connection parameters for new shared repository storage.

Shared Repository Storage Parameters

Connection type: JDBC JNDI

JDBC Driver: MySQL

JDBC URL: jdbc:mysql://localhost:3306/rsbi Build URL Advanced

User ID and password are required

User ID: root

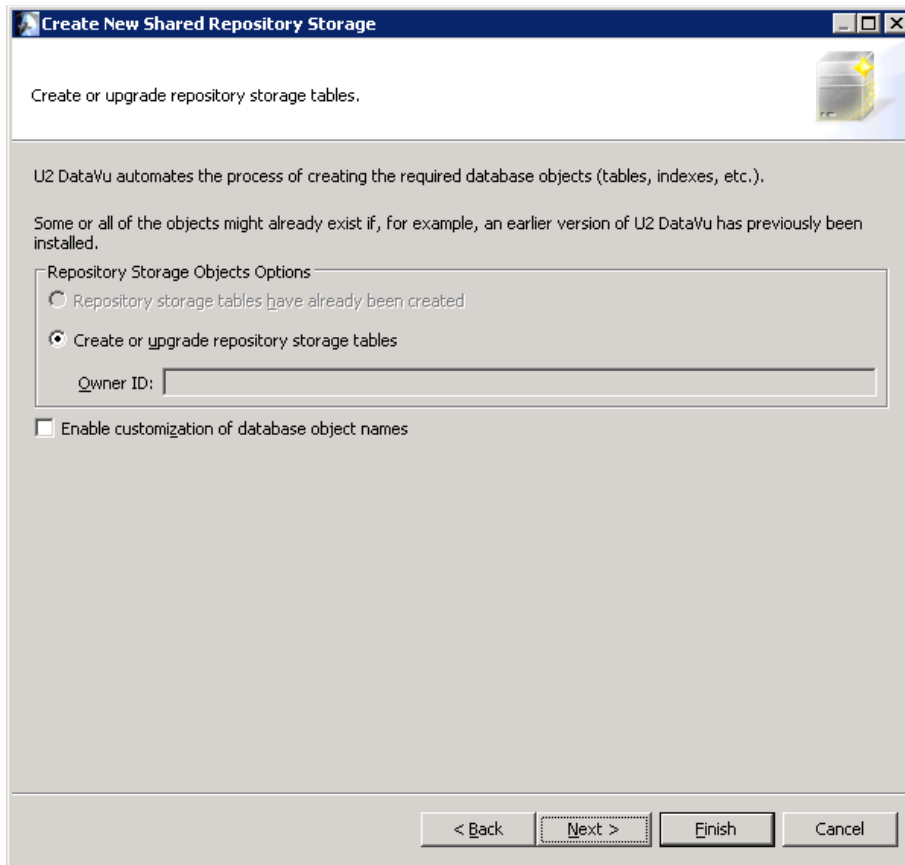
Password:

Remember password Change...

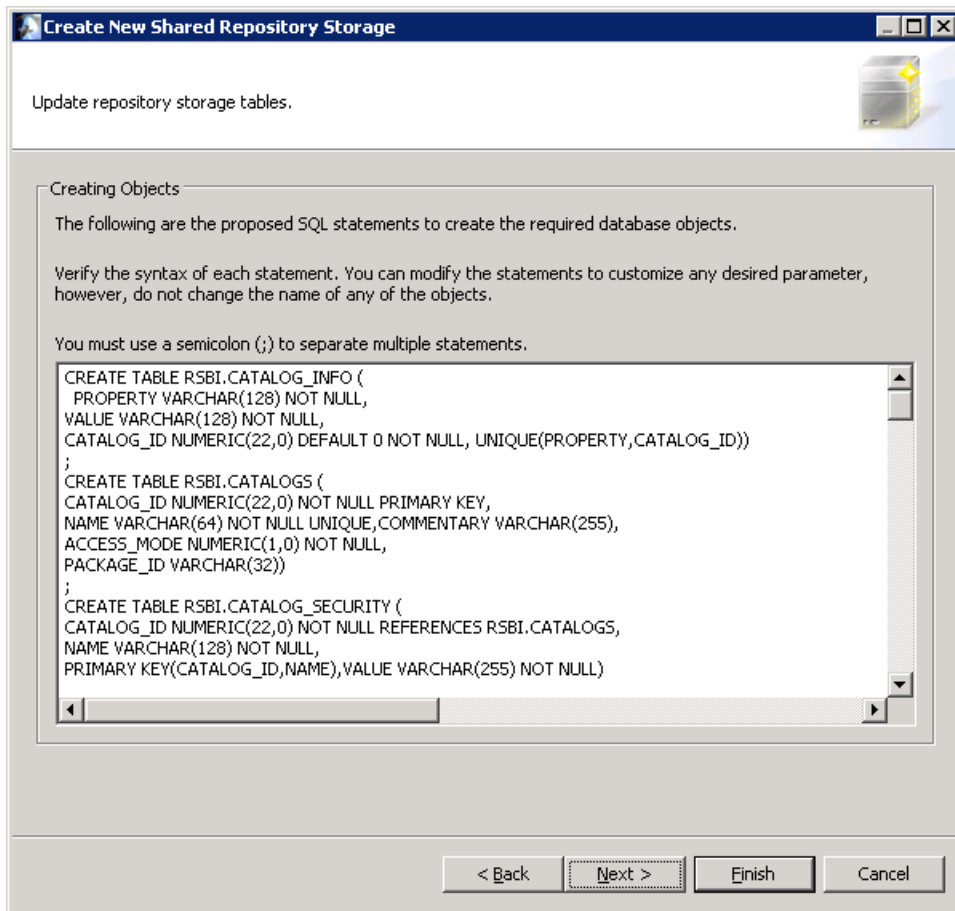
Test Connection

< Back Next > Finish Cancel

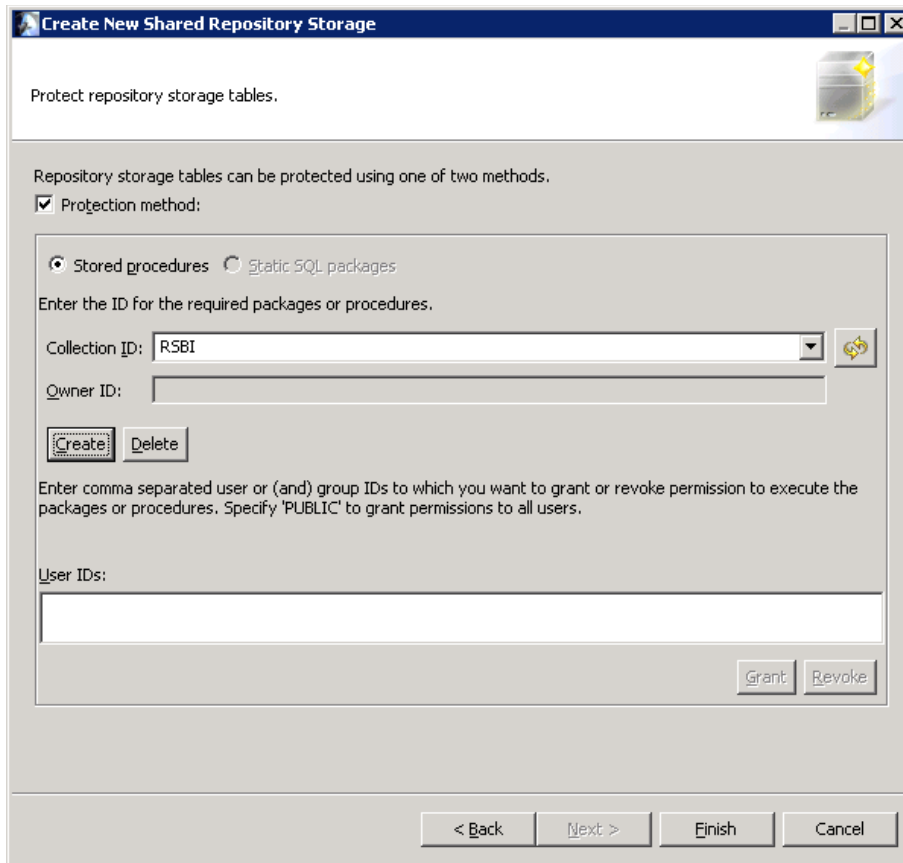
3. Choose **Create or upgrade repository storage tables**. Click **Next**.



4. The SQL/DDDL that creates the RSBI schema is displayed. Don't change this. Click **Next**.



5. We suggest you protect access to Stored Procedures. Select **Protection method**, enter RSBI as the **Collection ID** and then click **Create**.



6. The new repository storage is now shown.

